

Your Premier Resource for Metal Roofing and Metal Building Products.



PIONEER METALS

QUALITY & EXCELLENCE

—SINCE 2007—

- > **Low Rib**
- > **High Rib**
- > **Standing Seam**
- > **Specialty Panels** (*Corrugated, 5v Crimp*)



All Pioneer Metals 40-Year paint systems are **Energy Star Certified**. 10-Year paint system may vary.

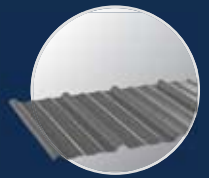
Note. Colors shown are approximate and may vary slightly from painted material.





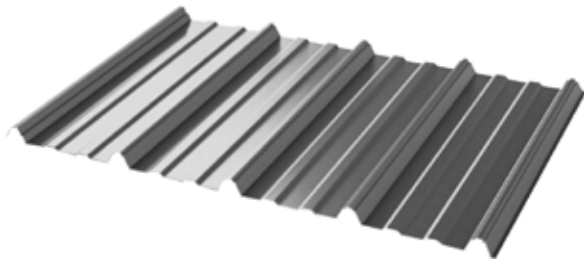
770-504-8688
 979 Highway 42 S,
 Jackson, GA, 30233
 www.pioneermetalsga.com

LOW RIB



Low-Rib - our most cost-effective metal roofing panel - is visually appealing, durable, and energy efficient.

This product is mostly used for carports, shelter applications, post-frame, and residential roofing.



RECOMMENDED
3:12
 PITCH
 AND ABOVE

26
 OR
29
 GAUGE

36"
 OVERALL
 COVERAGE

3/4"
 RIB HEIGHT



Galvalume
 (20-Year)



Color
 (10 & 40-Year)

Specifications:

- > Exposed fastener panel: Roof and wall applications
- > Suitable for solid deck or opening framing

Substrates and Coatings:

- > 29 and 26 gauge high strength steel.
- > Anti-corrosion AZ-50 Galvalume coating for painted and AZ-55 for unpainted steel.
- > 10 & 40 Year Paint-Warranty

Note. Colors shown are approximate and may vary slightly from painted material



All Pioneer Metals 40-Year Paint Systems are Energy Star Rated. 10-Year Paint Systems may vary

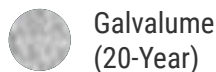


HIGH RIB



High-Rib - our most popular and versatile metal roofing panel - is the industry leading profile in strength and durability for commercial, industrial, and agricultural applications.

Featuring classic aesthetics and multifunctional use – i.e. it can be installed in various applications, including: roofing / walls (for residential or commercial use) and post-frame buildings.



Specifications:

- > Exposed fastener panel: Roof and wall applications
- > Suitable for solid deck or open framing

Substrates and Coatings:

- > 26 and 24 gauge high strength steel.
- > Anti-corrosion AZ-50 Galvalume coating for painted and AZ-55 for unpainted steel.
- > 26 gauge available in 40-Year Siliconized Modified Polyester Paint-Warranty
- > 24 gauge available in 40-Year White and 20-Year Galvalume

Note. Colors shown are approximate and may vary slightly from painted material



All Pioneer Metals 40-Year Paint Systems are Energy Star Rated. 10-Year Paint Systems may vary





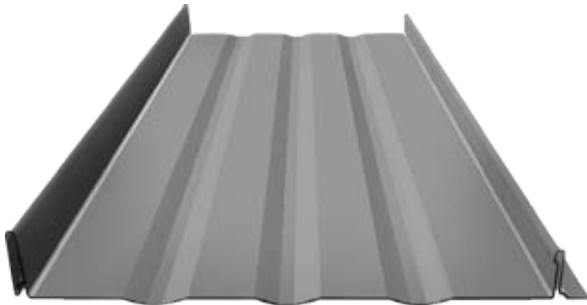
770-504-8688
 979 Highway 42 S,
 Jackson, GA, 30233
 www.pioneermetalsga.com

STANDING SEAM

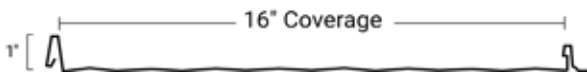


Standing Seam - our most desired roof panel - is often used on a wide-range of architectural buildings and high-end homes due to its appealing design and superior performance.


This panel features 1" high-ribs that provide increased wind-uplift performance, and is highly recommended for residential and commercial roofing applications. The metal roofing system is snapped securely with concealed fasteners for greater resistance to weather conditions.



Standing Seam



RECOMMENDED 3:12 PITCH AND ABOVE	24 OR 26 GAUGE	16" OVERALL COVERAGE	1" MAXIMUM RIB HEIGHT
--	---------------------------------------	-----------------------------------	------------------------------------

 Galvalume
(20-Year)

 Color
(40-Year)

Specifications:

- > Concealed fastener panel: Roof and wall applications.
- > Snap locking ribs.
- > Screw flange installation.
- > Suitable for solid decking.

Substrates and Coatings:

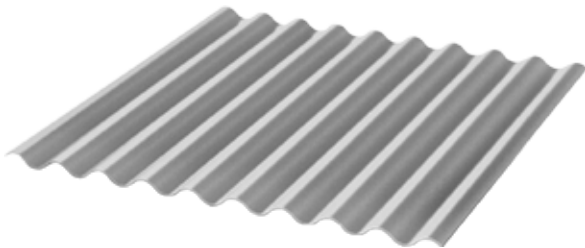
- > 24 and 26 gauge high strength steel.
- > Anti-corrosion AZ-50 Galvalume coating for painted and AZ-55 for unpainted steel.
- > 26 gauge available in 40-Year Paint-Warranty
- > 24 gauge available in Kynar 500 Paint-Warranty.
- > Crinkle finish is available in our color selection

Note. Colors shown are approximate and may vary slightly from painted material




All Pioneer Metals 40-Year Paint Systems are Energy Star Rated. 10-Year Paint Systems may vary





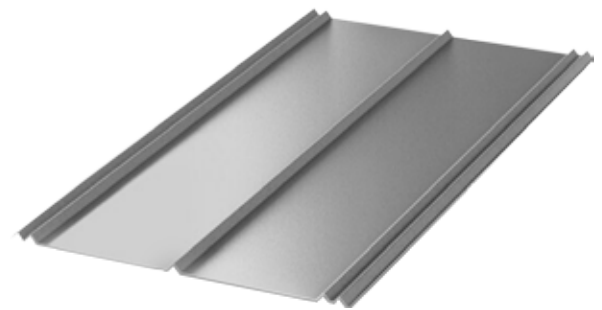
Corrugated




 Galvalume
 (20-Year)

Corrugated is our classic profile panel and is the traditional staple used in agricultural metal roofing applications.

Featuring traditional aesthetics, and it is highly recommended for accent applications (e.g. backsplashes, ceilings, and accent walls).



5V Crimp




 Galvalume
 (20-Year)

5V Crimp – one of our classic metal roofing panels – is commonly recognized for its use on rural metal roofing projects (e.g. farm buildings), but it is also suitable for residential use.

Featuring a timeless profile design with incredible durability – i.e. the panel is built with special profile enhancements (“U” over “V”) to provide maximum leak resistance.

Substrates and Coatings:

- > 26 gauge high strength steel.
- > Anti-corrosion AZ-55 Galvalume coating.
- > 26 gauge available in 20-Year Galvalume

Specifications:

- > Exposed fastener panel and wall applications
- > Suitable for solid deck or opening framing

Your Premier Resource for Metal Roofing and Metal Building Products.



All Pioneer Metals 40-Year paint systems are **Energy Star Certified**. 10-Year paint system may vary.



SHERWIN-WILLIAMS.
Coil Coatings



Contact Pioneer Metals

If you require further information or assistance, contact us now so that we can help!



979 Highway 42 S,
Jackson, GA, 30233



www.pioneermetalsga.com
Pioneer Metals Website



770-504-8688
Customer Support

